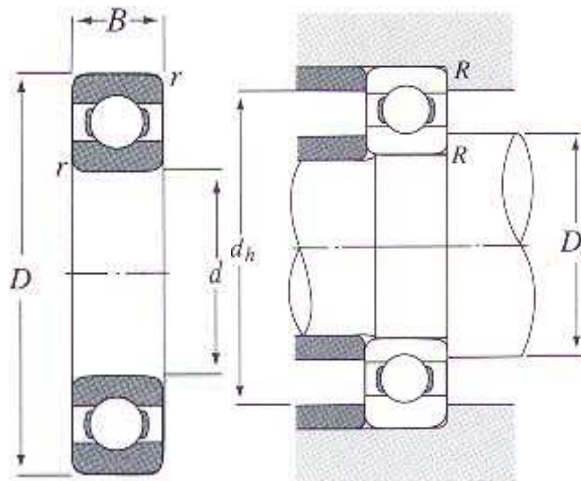


$$P_r = X F_r + Y F_a$$



F_a --- C_{or}	e	$F_a \leq e$		$F_a > e$	
		x	y	x	y
0.010	0.18	1	0	0.56	2.46
0.020	0.20				2.14
0.040	0.24				1.83
0.070	0.27				1.61
0.10	0.29				1.48
0.15	0.32				1.35
0.20	0.35				1.25
0.30	0.38				1.13
0.40	0.41				1.05
0.50	0.44				1.00

$$P_{or} = 0.6 F_r + 0.5 F_a$$

When $P_{or} < F_r$, Let $P_{or} = F_r$

Main size(mm)				Load rating(kN)		Max on out speed(rpm)		Bearing	Fixing size(mm)			Weight(kg)
d	D	B	r _{sim1})	C _r	C _{or}	Grease	Oil	No.	D _s	d _h	R	
10	15	3	0.1	1.01	0.555	36000	42000	6700	10.8	14.2	0.1	0.0015
	19	5	0.3	1.83	0.925	32000	38000	6800	12	17	0.3	0.005
	22	6	0.3	2.70	1.27	30000	36000	6900	12	20	0.3	0.009
	26	8	0.3	4.55	1.96	29000	34000	6000	12.5	23.5	0.3	0.019
	30	9	0.6	5.10	2.39	25000	30000	6200	15	25	0.6	0.032
	35	11	0.6	8.20	3.50	23000	27000	6300	15	30	0.6	0.053
12	18	4	0.2	1.07	0.655	32000	38000	6701	13.6	16.4	0.2	0.003
	21	5	0.3	1.92	1.04	29000	35000	6801	14	19	0.3	0.006
	24	6	0.3	2.89	1.46	27000	32000	6901	14	22	0.3	0.011
	28	7	0.3	5.10	2.39	26000	30000	16001	14.5	15.5	0.3	0.019
	28	8	0.3	5.10	2.39	26000	30000	6001	14.5	25.5	0.3	0.021
	32	10	0.6	6.10	2.75	22000	26000	6201	17	27	0.6	0.037
	37	12	1	9.70	4.20	20000	24000	6301	18	31	1	0.060
15	21	4	0.2	1.15	0.790	29000	34000	6702	16.6	19.4	0.2	0.0035
	24	5	0.3	2.08	1.26	26000	31000	6802	17	22	0.3	0.007
	28	7	0.3	4.10	2.06	24000	28000	6902B	17	26	0.3	0.016
	32	8	0.3	5.60	2.84	22000	26000	16002	17.5	29.5	0.3	0.025
	32	11	0.3	5.60	2.841	22000	26000	6002	17.5	29.5	0.3	0.030
	35	13	0.6	7.75	3.60	19000	23000	6202	20	30	0.6	0.045
42	14	1	11.4	5.45	17000	21000	6302	21	36	1	0.082	
17	23	4	0.2	1.20	0.8654	26000	31000	6703	18.6	21.4	0.2	0.004

20	26	5	0.3	2.80	1.72	24000	28000	6803A	19	24	0.3	0.008
	30	7	0.3	4.65	2.58	22000	26000	6903	19	28	0.3	0.018
	35	8	0.3	6.80	3.35	20000	24000	16003	19.5	32.5	0.3	0.032
	35	10	0.3	6.80	3.35	20000	24000	6003	19.5	32.5	0.3	0.039
	40	12	0.6	9.60	4.60	18000	21000	6203	22	35	0.6	0.066
	47	14	1	13.5	6.55	16000	19000	6303	23	41	1	0.115
	62	17	1.1	22.7	10.8	14000	16000	6403	24	55	1	0.270
20	27	4	0.2	1.79	1.32	23000	28000	6704	21.6	25.4	0.2	0.005
	32	7	0.3	4.00	2.47	21000	25000	6804	22	30	0.3	0.019
	37	9	0.3	6.40	3.70	19000	23000	6904	22.2	35	0.3	0.036
	42	8	0.3	7.90	4.50	18000	21000	16004	25	39.5	0.3	0.051
	42	12	0.6	9.40	5.05	18000	21000	6004	25	37	0.6	0.069
	47	14	1	12.8	6.65	16000	18000	6204	26	41	1	0.106
	50	15	1.1	15.9	7.90	14000	17000	6304	27	45	1	0.144
72	19	1.1	28.5	13.9	12000	14000	6404	27	65	1	0.400	
22	44	12	0.6	9.40	5.05	17000	20000	60/22	27	39	0.6	0.074
	50	14	1	12.9	6.80	14000	17000	62/22	28	44	1	0.117
	56	16	0.1	18.4	9.25	13000	15000	63/22	29	49	1	0.176
25	32	4	0.2	1.93	1.55	19000	23000	6705	26.6	30.4	0.2	1.006
	37	7	0.3	4.30	2.99	18000	21000	6805	27	35	0.3	1.022
	42	9	0.3	7.05	4.55	16000	19000	6905	27	40	0.3	0.042
	47	8	0.3	8.35	5.10	15000	18000	16005	27.5	44.5	0.3	0.060
	47	12	0.6	10.1	5.85	15000	18000	6005	30	42	0.6	0.080
	52	15	1	14.0	7.85	13000	15000	6205	31	46	1	0.128
	62	17	1.1	21.2	10.9	12000	14000	6305	32	55	1	0.232
	80	21	1.5	34.5	17.5	10000	12000	6405	33.5	71.5	1.5	0.530

Main size(mm)				Load rating(kN)		Maxronout speed(rpm)		Bearing	Fixing size(mm)			Weight(kg)
d	D	B	rsimn1)	Cr	Cor	Grease	Oil	No.	Ds	dh	R	
28	52	12	0.6	12.5	7.40	14000	16000	60/28	33	47	0.6	0.098
	58	16	1	17.9	9.75	12000	14000	62/28	34	52	1	0.171
	68	18	1.1	26.7	14.0	11000	13000	63/28	35	61	1	0.284
30	37	4	0.2	2.05	1.78	17000	20000	6706	31.6	35.4	0.2	0.008
	42	7	0.3	4.70	3.65	15000	18000	6806	32	40	0.3	0.026
	47	9	0.3	7.25	5.00	14000	17000	6906	32	45	0.3	0.048
	55	9	0.3	11.2	7.35	13000	15000	1606	32.5	52.5	0.3	0.091
	55	13	1	13.2	8.30	13000	15000	6006	36	49	1	0.116
	62	16	1	19.5	11.3	11000	13000	6206	36	56	1	0.199
	72	19	1.1	26.7	15.0	10000	12000	6306	37	65	1	0.360
32	90	23	1.5	43.5	23.9	8800	10000	6406	38.5	81.5	1.5	0.735
	58	13	1	15.1	9.15	12000	15000	60/32A	38	52	1	0.129
	65	17	1	20.7	11.6	11000	12000	62/32	38	59	1	0.226
35	75	20	1.1	29.8	16.9	9500	11000	63/32	39	68	1	0.382
	47	7	0.3	4.90	4.05	13000	16000	6807	37	45	0.3	0.029
	55	10	0.6	11.2	7.45	12000	15000	6907A	39	51	0.6	0.074
	62	9	0.3	11.7	8.20	12000	14000	16007	37.5	59.5	0.3	0.110
	62	14	1	16.0	10.3	12000	14000	6007	41	56	1	0.155
	72	17	1.1	25.7	15.3	9800	11000	6207	42	65	1	0.288
	80	21	1.5	33.5	19.1	8800	10000	6307	43.5	71.5	1.5	0.457
40	100	25	1.5	55.0	31.0	7800	9100	6407	43.5	91.5	1.5	0.952
	52	7	0.3	5.10	4.40	12000	14000	6808	42	50	0.3	0.033
	62	12	0.6	14.6	10.2	11000	13000	6908A	44	58	0.6	0.110
	68	9	0.6	12.6	9.65	10000	12000	16008	42.5	65.5	0.3	0.125
	68	15	1	16.8	11.5	10000	12000	6008	46	62	1	0.190
40	80	18	1.1	29.1	17.8	8700	10000	6208	47	73	1	0.366
	90	23	1.5	40.5	24.0	7800	9200	6308	48.5	81.5	1.5	0.630

	110	27	2	63.5	36.5	7000	8200	6408	50	100	2	1.23
45	58	7	0.3	6.40	5.65	11000	12000	6809A	47	56	0.3	0.040
	68	12	0.6	15.1	11.2	9800	12000	6909A	49	64	0.6	0.128
	75	10	0.6	12.9	10.5	9200	11000	16009	50	70	0.6	0.171
	75	16	1	21.0	15.1	9200	11000	6009	51	69	1	0.237
	85	19	1.1	32.5	20.4	7800	9200	6209	52	78	1	0.398
	100	25	1.5	53.0	32.0	7000	8200	6309	53.5	91.5	1.5	0.814
	120	29	2	77.0	45.0	6300	7400	6409	55	110	2	1.53
	65	7	0.3	6.60	6.10	9600	11000	6810	52	63	0.3	0.052
50	72	12	0.6	15.6	12.2	8900	11000	6910B	54	68	0.6	0.132
	80	10	0.6	13.2	11.3	8400	9800	16010	55	75	0.6	0.180
	80	16	1	21.8	16.6	8400	9800	6010	56	74	1	0.261
	90	20	1.1	35.0	23.2	7100	8300	6210	57	83	1	0.454
	110	27	2	62.0	38.5	6400	7500	6310	60	100	2	1.07
	130	31	2.1	83.0	49.5	5700	6700	6410	62	118	2	1.88

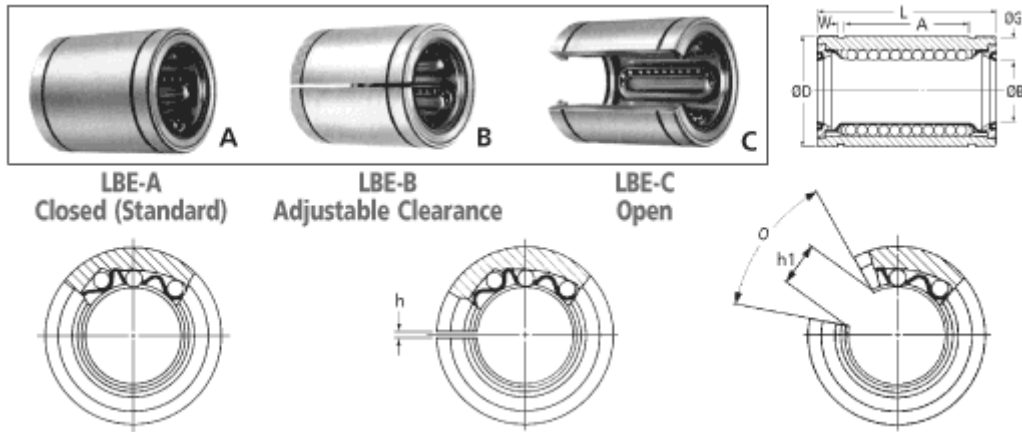
d	Main size(mm)			Load rating(kN)		Maxronout speed(rpm)		Bearing	Fixing size(mm)			Weight(kg)
	D	B	rsimn1)	Cr	Cor	Grease	Oil	No.	Ds	dh	R	
55	72	9	0.3	8.80	8.10	8700	10000	6811	57	70	0.3	0.083
	80	13	1	16.0	13.3	8200	9600	6911	60	75	1	0.180
	90	11	0.6	18.6	15.3	7700	9000	16011	60	85	0.6	0.258
	90	18	1.1	28.3	21.2	7700	9000	6011	62	83	1	0.388
	100	21	1.5	43.5	29.2	6400	7600	6211	63.5	91.5	1.5	0.601
	120	29	2	71.5	45.0	5800	6800	6311	65	110	2	1.37
	140	33	2.1	89.0	54.0	5200	6100	6411	67	128	2	2.29
60	78	10	0.3	11.5	10.6	8000	9400	6812	62	76	0.3	0.106
	85	13	1	16.4	14.3	7600	8900	6912	65	80	1	0.193
	95	11	0.6	20.0	17.5	7000	8300	16012	65	90	0.6	0.283
	95	18	1.1	29.5	23.2	7000	8300	6012	67	88	1	0.414
	110	22	1.5	52.5	36.0	6000	7000	6212	68.5	101.5	1.5	0.783
	130	31	2.1	82.0	52.0	5400	6300	6312	72	118	2	1.73
	150	35	2.1	102	64.5	4800	5700	6412	72	138	2	2.77
65	85	10	0.6	11.6	11.0	7400	8700	6813	69	81	0.6	0.128
	90	13	1	17.4	16.1	7000	8200	6913	70	85	1	0.206
	100	11	0.6	20.5	18.7	6500	7700	16013	70	95	0.6	0.307
	100	18	1.1	30.5	25.2	6500	7700	6013	72	93	1	0.421
	120	23	1.5	57.5	40.0	5500	6500	6213	73.5	111.5	1.5	0.990
	140	33	2.1	92.5	60.0	4900	5800	6313	77	128	2	2.08
	160	37	2.1	111	72.5	4400	5200	6413	77	148	2	3.30
70	90	10	0.6	12.1	11.9	6900	8100	6814	74	86	0.6	0.137
	100	16	1	23.7	21.2	6500	7700	6914	75	95	1	0.334
	110	13	0.6	24.4	22.6	6100	7100	16014	75	105	0.6	0.441
	110	20	1.1	38.0	31.0	6100	7100	6014	77	103	1	0.604
	125	24	1.5	62.0	44.0	5100	6000	6214	78.5	116.5	1.5	1.07
	150	35	2.1	1.4	68.0	4600	5400	6314	82	138	2	2.52
	180	42	3	128	89.5	4100	4800	6414	84	166	2.5	4.83
75	95	10	0.6	12.5	12.9	6400	7600	6815	79	91	0.6	0.145
	105	16	1	24.4	22.6	6100	7200	6915	80	100	1	0.353
	115	13	0.6	25.0	24.0	5700	6700	16015	80	110	0.6	0.464
	115	20	1.1	39.5	33.5	5700	6700	6015	82	108	1	0.649
	130	25	1.5	66.0	49.5	4800	5600	6215	83.5	121.5	1.5	1.18
	160	37	2.1	113	77.0	4300	5000	6315	87	148	2	30.2
	190	45	3	138	99.0	3800	4500	6415	89	176	2.5	5.72

80	100	10	0.6	12.7	13.3	6000	7100	6816	84	96	0.6	0.154
	110	16	1	24.9	24.0	5700	6700	6916	85	105	1	0.373
	125	14	0.6	25.4	25.1	5300	6200	16016	85	120	0.6	0.597
	125	322	1.1	47.5	40.0	5300	6200	6016	87	118	1	0.854
	140	26	2	72.5	53.0	4500	5300	6216	90	130	2	1.40
	170	39	2.1	123	86.5	4000	4700	6316	92	158	2	3.59
	200	48	3	164	125	3600	4200	6416	94	186	2.5	6.76
85	110	13	1	18.7	19.0	5700	6700	6817	90	105	1	0.270
	120	18	1.1	32.0	29.6	5400	6300	6917	91.5	113.5	1	0.536
	130	14	0.6	25.9	26.2	5000	5900	16017	90	125	0.6	0.626
	130	22	1.1	49.5	43.0	5000	5900	6017	92	123	1	0.890
	150	28	2	83.5	64.0	4200	5000	6217	95	140	2	1.79
	180	41	3	133	97.0	3800	4500	6317	99	166	2.5	4.23
	210	52	4	165	128	3400	4000	6417	103	192	3	7.95

Main size(mm)				Load rating(kN)		Maxronout speed(rpm)		Bearing	Fixing size(mm)			Weight(kg)
d	D	B	rsimn1)	Cr	Cor	Grease	Oil	No.	Ds	dh	R	
90	115	13	1	19.0	19.7	5400	6300	6818	95	110	1	0.285
	125	18	1.1	33.0	31.5	5100	6000	6918	96.5	118.5	1	0.554
	140	16	1	33.5	33.5	4700	5600	16018	96	134	1	0.848
	140	24	1.5	58.0	49.5	4700	5600	6018	98.5	131.5	1.5	1.02
	160	30	2	96.0	71.5	4000	4700	6218	100	150	2	2.15
	190	43	3	143	107	3600	4200	6318	104	176	2.5	4.91
	225	54	4	184	149	3200	3800	6418	108	207	3	11.4
95	120	13	1	19.3	20.5	5000	5900	6819	100	115	1	0.300
	130	18	1.1	33.5	33.5	4800	5700	6919	101.5	123.5	1	0.579
	145	16	1	34.5	35.0	4500	5300	16019	101	139	1	0.885
	145	24	1.5	60.5	54.0	4500	5300	6019	103.5	136.5	31.5	1.08
	170	32	2.1	109	82.0	3700	4400	6219	107	158	2	2.62
	200	45	3	153	119	3300	3900	6319	109	186	2.5	5.67
	240	55	4	186	153	3000	3500	6419	113	222	3	13.4
100	125	13	1	19.6	21.2	4800	5600	6820	105	120	1	0.313
	140	20	1.1	41.0	39.5	4500	5300	6920	106.5	133.5	1	0.785
	150	16	1	35.0	36.5	4200	5000	16020	106	144	1	0.910
	150	24	1.5	60.0	54.0	4200	5000	6020	108.5	141.5	1.5	1.15
	180	34	2.1	122	93.0	3500	4200	6220	112	168	2	3.14
	210	47	3	173	141	3200	3700	6320	114	201	2.5	7.00
	250	58	4	206	175	2900	3400	6420	118	232	3	15.0
105	130	13	1	19.8	22.0	4600	5400	6821	110	125	1	0.330
	145	20	1.1	42.5	42.0	4300	5100	6921	111.5	138.5	1	0.816
	160	18	1	52.0	50.5	4000	4700	16021	111	154	1	1.20
	160	26	2	72.5	65.5	4000	4700	6021	115	150	2	1.59
	190	36	2.1	133	105	3400	4000	6221	117	178	2	3.70
	225	49	3	184	153	3000	3600	6321	119	211	2.5	8.05
	260	60	4	207	179	2700	3200	6421	123	242	3	16.8
110	140	16	1	28.8	32.0	4300	5100	6822A	115	135	1	0.515
	150	20	1.1	43.5	44.5	4100	4800	6922	116.5	143.5	1	0.849
	170	19	1	57.5	56.5	3800	4500	16022	116	164	1	1.46
	170	28	2	82.0	73.0	3800	4500	6022	120	160	2	1.96
	200	38	2.1	144	117	3200	3800	6222	122	188	2	4.36
	240	50	3	205	179	2900	3400	6322	124	226	2.5	9.54
	280	65	4	247	227	2600	3000	6422	128	262	3	21.3

120	150	16	1	28.9	33.0	4000	4700	6824	125	145	1	0.555
	165	22	1.1	53.0	54.0	3800	4400	6924	126.5	158.5	1	1.15
	180	19	1	63.0	63.5	3500	4100	16024	126	174	1	1.56
	180	28	2	85.0	79.5	3500	4100	6024	130	170	2	2.07
	215	40	2.1	155	131	2900	3400	6224	132	203	2	5.15
	260	55	3	207	185	2600	3100	6324	134	246	2.5	12.4
	310	72	5	291	287	2300	2800	6424	142	282	4	29.0

Linear Bearing



Material

LBE: Carbon Steel

LB: Stainless Steel 440C

Performance

Shaft Tolerance: h6 (Normal Fit) j6 (Closer Fit)

Housing Tolerance: H7 (Clearance Fit) J7 (Interference Fit)

Max Operating Temp: +100 (intermittent) +80 (continuous)

Other Info.

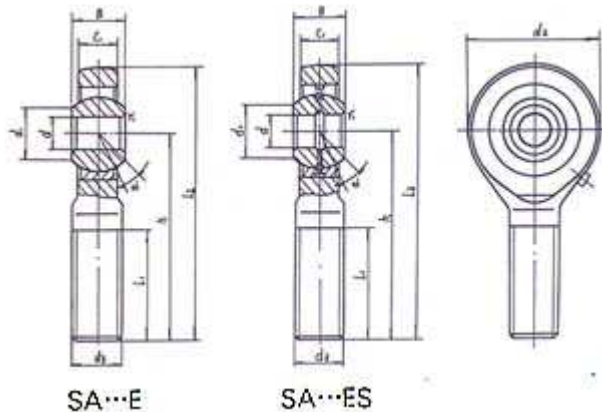
LBE60 & LBE80 are not sealed and are fitted with metal ball retainers. Other sizes have resin retainers fitted as standard - metal retainers available on request, P.O.A.

For use with h6 Hard Linear Shafting Z--A Z--B 60 HRC

Steel ground & polished

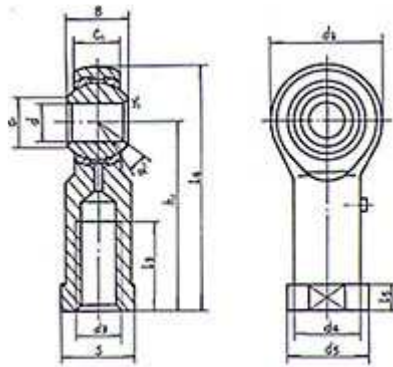
Part Number	Shaft ?br> mm	Wt. g Type A	A -Ball Circs.	Wt. g Type B	B -Ball Circs.	Wt. g Type C	C -Ball Circs.		Tol.		Tol.	L	Tol.
LBE5 / LB5	5	10	4	9.5	4	-	-	5	+8/-0	12	0/-8	22	0/- 210
LBE8 / LB8	8	20	4	19.0	4	-	-	8	+8/-0	16	0/-8	25	0/- 210
LBE12 / LB12	12	41	4	40.0	4	32	3	12	+8/-0	22	0/-9	32	0/- 250
LBE16 / LB16	16	56	4	54.5	4	44	3	16	+9/-1	26	0/-9	36	0/- 250
LBE20 / LB20	20	92	5	90.0	5	75	4	20	+9/-1	32	0/-11	45	0/- 250
LBE25 / LB25	25	220	6*	215.0	6*	181	5*	25	+11/- 1	40	0/-11	58	0/- 300

		min	max	min	max			min	max	max	max	max						
Series E																		
SI5E	5	6	0.3	4.5	7	21	M5	30	11	40.5	5	10	13	10	3.4	8.1	13	0.016
SI6E	6	6	0.3	4.5	8	21	M6	30	11	40.5	5	11	13	11	3.4	8.1	13	0.017
SI8E	8	8	0.3	6.5	10	24	M8	36	15	48	5	13	16	13	5.5	12.9	15	0.035
SI10E	10	9	0.3	7.5	13	29	M10	43	15	57.5	6.5	16	19	16	8.1	17.6	12	0.061
SI12E	12	10	0.3	8.5	15	34	M12	50	18	67	7	19	22	18	10	24.5	10	0.096
SI15ES	15	12	0.3	10.5	18	40	M14	61	21	81	8	21	26	21	16	36	8	0.162
SI17ES	17	14	0.3	11.5	20	46	M16	67	24	90	10	25	29	27	21	45	10	0.233
SI20ES	20	16	0.3	13.5	24	53	M20*1.5	77	30	103.5	10	28	34	30	29	60	9	0.324
SI25ES	25	20	0.6	18	29	64	M24*2	94	36	126	12	35	42	36	48	83	7	0.625
SI30ES	30	22	0.6	20	34	73	M30*2	110	45	146.5	15	42	50	46	62	110	6	0.976
SI35ES	35	25	0.6	22	39	82	M36*3	125	60	166	15	48	58	55	79	146	6	1.52
SI40ES	40	28	0.6	24	45	92	M39*3	142	65	188	18	52	65	60	99	180	7	2.06
SI45ES	45	32	0.6	28	50	102	M42*3	145	65	196	20	58	70	65	127	240	7	2.72
SI50ES	50	35	0.6	31	55	112	M45*3	160	68	216	20	62	75	70	156	290	6	3.57
SI60ES	60	44	1.0	39	66	135	M52*3	175	70	242.5	20	70	88	80	245	450	6	5.63
SI70ES	70	49	1.0	43	77	160	M56*4	200	80	280	20	80	98	85	313	610	6	8.33
SI80ES	80	55	1.0	48	88	180	M64*4	230	85	320	25	95	110	95	400	750	6	13.04



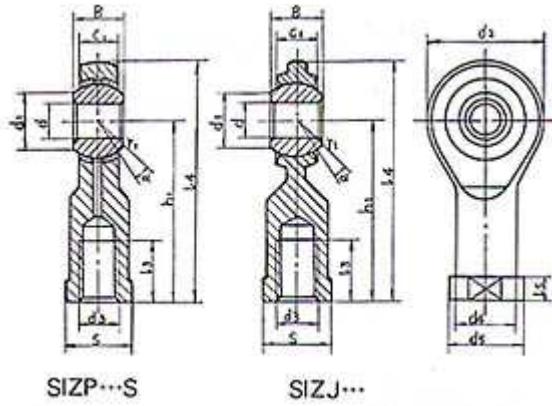
Bearings number	Dimensions mm										Load ratings KN		α° ≈	Weight ≈kg
	d	B	r	S	C1	d1	d2	d3	h	l1	l2	Dyamic		
Series E														
SA5E	5	6	0.3	4.5	7	21	M5	36	16	46.5	3.4	8.1	13	0.011
SA6E	6	6	0.3	4.5	8	21	M6	36	16	46.5	3.4	8.1	13	0.013
SA8E	8	8	0.3	6.5	10	24	M8	42	21	54	5.5	12.9	15	0.026
SA10E	10	9	0.3	7.5	13	29	M10	48	26	62.5	8.1	17.6	12	0.044
SA12E	12	10	0.3	8.5	15	34	M12	54	28	71	10	24.5	10	0.066
SA15ES	15	12	0.3	10.5	18	40	M14	63	34	83	16	36	8	0.121
SA17ES	17	14	0.3	11.5	20	46	M16	69	36	92	21	45	10	0.172
SA20ES	20	16	0.3	13.5	24	53	M20*1.5	78	43	104.5	29	60	9	0.283
SA25ES	25	20	0.6	18	29	64	M24*2	94	53	126	48	83	7	0.504
SA30ES	30	22	0.6	20	34	73	M30*2	110	65	146.5	62	110	6	0.835
SA35ES	35	25	0.6	22	39	82	M36*3	140	82	181	79	146	6	1.41
SA40ES	40	28	0.6	24	45	92	M39*3	150	86	196	99	180	7	1.86
SA45ES	45	32	0.6	28	50	102	M42*3	163	92	214	127	240	7	2.57
SA50ES	50	35	0.6	31	55	112	M45*3	185	104	241	156	290	6	3.58
SA60ES	60	44	1.0	39	66	135	M52*3	210	115	277.5	245	450	6	5.73
SA70ES	70	49	1.0	43	77	160	M56*4	235	125	315	313	610	6	7.94

SA80ES	80	55	1.0	48	88	180	M64*4	270	140	360	400	750	6	12.06
--------	----	----	-----	----	----	-----	-------	-----	-----	-----	-----	-----	---	-------



Bearings number	Dimensions mm														Load ratings KN		α° ≈	Weight ≈kg
	d	B	r1S min	C1 max	d1 min	d2 max	d3	h1	l3 min	l4 max	l5 max	d4 max	d5 max	S	Dyamic	Static		
Series P																		
SIBP5S	5	8	0.3	6	7.7	16	M5	27	14	35	4	9	11	9	3.3	4.1	13	0.016
SIBP6S	6	9	0.3	6.75	9	18	M6	30	14	39	5	10	13	11	4.3	5.3	13	0.026
SIBP8S	8	12	0.3	9	10.4	22	M8	36	17	47	5	12.5	16	14	6.8	8.5	14	0.044
SIBP10S	10	14	0.6	10.5	12.9	26	M10	43	21	56	6.5	15	19	17	10	11	14	0.072
SIBP12S	12	16	0.6	12	15.4	30	M12	50	24	65	6.5	17.5	22	19	13	14	13	0.108
SIBP14S	14	19	0.6	13.5	16.9	34	M14	57	27	74	8	20	25	22	17	20	16	0.161
SIBP16S	16	21	0.6	15	19.4	38	M16	64	33	83	8	22	27	22	21	25	15	0.225
SIBP18S	18	23	0.6	16.5	21.9	42	M18*1.5	71	36	92	10	25	31	27	26	30	15	0.295
SIBP20S	20	25	0.6	18	24.4	46	M20*1.5	77	40	100	10	27.5	34	30	31	35	15	0.382
SIBP22S	22	28	0.6	20	25.8	50	M22*1.5	84	43	109	12	30	37	32	38	43	15	0.488
SIBP25S	25	31	0.6	22	29.6	60	M24*2	94	48	124	12	33.5	42	36	47	65	15	0.749
SIBP28S	28	35	0.6	25	32.3	66	M27*2	103	53	136	12	37	46	41	59	77	15	0.949
SIBP30S	30	37	0.6	25	34.8	70	M30*2	110	56	145	15	40	50	41	63	86	17	1.13

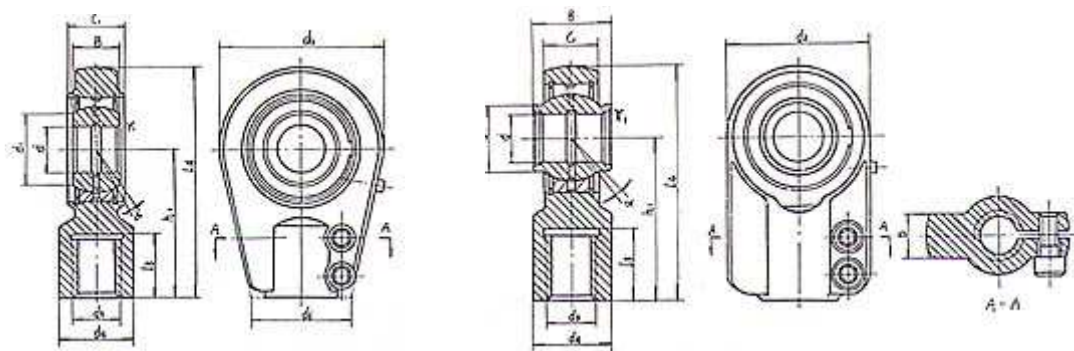
Bearings number	Dimensions mm											Load ratings KN		α° ≈	Weight ≈kg
	d	B	r1S min	C1 max	d1 min	d2 max	d3	h	l1 min	l2 max	Dyamic	Static			
Series P															
SABP5S	5	8	0.3	6	7.7	16	M5	33	20	41	3.3	3.9	13	0.016	
SABP6S	6	9	0.3	6.75	9	18	M6	36	22	45	4.3	5.3	13	0.026	
SABP8S	8	12	0.3	9	10.4	22	M8	42	25	53	6.8	8.5	14	0.044	
SABP10S	10	14	0.6	10.5	12.9	26	M10	48	29	61	10	11	14	0.072	
SABP12S	12	16	0.6	12	15.4	30	M12	54	33	69	13	14	13	0.108	
SABP14S	14	19	0.6	13.5	16.9	34	M14	60	36	77	17	20	16	0.161	
SABP16S	16	21	0.6	15	19.4	38	M16	66	40	85	21	25	15	0.225	
SABP18S	18	23	0.6	16.5	21.9	42	M18*1.5	72	44	93	26	30	15	0.295	
SABP20S	20	25	0.6	18	24.4	46	M20*1.5	78	47	101	31	35	15	0.382	
SABP22S	22	28	0.6	20	25.8	50	M22*1.5	84	51	109	38	43	15	0.488	
SABP25S	25	31	0.6	22	29.6	60	M24*2	94	57	124	47	65	15	0.749	
SABP28S	28	35	0.6	25	32.3	66	M27*2	103	62	136	59	77	15	0.949	
SABP30S	30	37	0.6	25	34.8	70	M30*2	110	66	145	63	86	17	1.13	



Bearings number	Dimensions mm														Load ratings KN		α° ≈	Weight ≈kg
	d	B	r1S min	C1 max	d1 min	d2 max	d3	h1	l3 min	l4 max	l5 max	d4 max	d5 max	S	Dyamic	Static		
Series ZP																		
SIZP4S	4.83	7.92	0.3	6.35	7.8	15.88	10-33	26.97	14.27	34.93	4.75	7.54	10.31	7.92	3.4	4.6	10	0.015
SIZP6S	6.35	9.53	0.3	7.14	8.4	19.05	1/4-28	33.32	19.05	42.85	4.75	9.15	11.91	9.53	4.5	7.7	13	0.025
SIZP7S	7.94	11.10	0.3	8.74	11.4	22.23	5-16/24	34.93	19.05	46.02	4.75	10.72	12.70	11.10	6.9	8.4	10	0.036
SIZP9S	9.53	12.70	0.6	10.31	13.1	25.40	3/8-24	41.28	23.80	53.98	6.35	13.89	17.45	14.27	9.4	10	9	0.061
SIZP11S	11.11	14.27	0.6	11.10	14.9	28.58	7/16-20	46.02	26.97	60.33	6.35	15.49	19.05	15.88	11	13	11	0.081
SIZP12S	12.70	15.88	0.6	12.70	17.7	33.23	1/2-20	53.98	30.15	70.64	6.35	18.67	22.23	19.05	15	19	9	0.133
SIZP15P	15.88	19.05	0.6	14.27	21.3	38.10	5/8-18	63.50	38.10	82.55	7.92	21.84	25.40	22.23	20	21	11	0.190
SIZP19S	19.05	22.23	0.6	17.45	24.8	44.45	3/4-16	73.03	44.45	95.25	7.92	25.02	28.58	25.40	29	29	10	0.285
SIZP25P	25.40	34.93	0.6	25.40	32.2	69.85	5/4-12	104.78	53.98	139.70	11.10	37.72	44.45	38.10	60	101	14	1.00
Series ZJ																		
SIZJ4	4.83	7.92	0.3	5.94	7.8	15.88	10-32	26.97	12.70	34.93	4.75	7.54	10.31	7.92	3.6	6.8	10	0.018
SIZJ6	6.35	9.53	0.3	6.35	8.4	19.05	1/4-58	33.32	15.88	42.85	4.75	9.15	11.91	9.53	5.4	9.6	13.5	0.023
SIZJ7	7.94	11.10	0.3	7.92	11.4	22.23	5/16-24	34.93	15.88	46.02	4.75	10.72	12.70	11.10	8.5	12	11	0.036
SIZJ9	9.53	12.70	0.6	9.12	13.1	25.40	3/8-24	41.28	19.05	53.98	6.35	13.89	17.45	14.27	11	15	11	0.059
SIZJ11	11.10	14.27	0.6	10.31	14.9	28.58	7/16-20	46.02	22.23	60.33	6.35	15.49	19.05	15.88	14	21	10.5	0.082
SIZJ12	12.70	15.88	0.6	11.50	17.7	33.32	1/2-20	53.98	25.40	70.64	6.35	18.67	22.23	19.05	18	28	10	0.132
SIZJ15	15.88	19.05	0.6	12.29	21.3	38.10	5/8-18	63.50	31.75	82.55	7.92	21.84	25.40	22.23	23	29	13	0.195
SIZJ19	19.05	22.23	0.6	15.06	24.8	44.45	3/4-16	73.03	34.93	95.25	7.92	25.02	28.58	25.40	34	44	12	0.295

Bearings number	Dimensions mm										Load ratings KN		α° ≈	Weight ≈kg
	d	B	r1S min	C1 max	d1 min	d2 max	d3	h	l1 min	l2 max	Dyamic	Static		
Series P														
SAZP4S	4.83	7.92	0.3	6.35	7.8	15.88	10-32	31.75	19.05	39.70	3.4	3.8	10	0.013
SAZP6S	6.35	9.53	0.3	7.14	8.4	19.05	1/4-28	39.67	25.40	49.20	4.5	6.6	13	0.022
SAZP7S	7.94	11.10	0.3	8.74	11.4	22.23	5-16/24	47.63	31.75	58.72	6.9	8.4	210	0.037
SAZP9S	9.53	12.70	0.6	10.31	13.1	25.40	3/8-24	49.23	31.75	61.93	9.4	10	9	0.055
SAZP11S	11.11	14.27	0.6	11.10	14.9	28.58	7/16-20	53.98	34.93	68.28	11	13	11	0.078
SAZP12S	12.70	15.88	0.6	12.70	17.7	33.32	1/2-20	61.93	38.10	78.59	15	19	9	0.12
SAZP15S	15.88	19.05	0.6	14.27	21.3	38.10	5/8-18	66.68	41.28	85.73	20	21	11	0.18
SAZP19S	19.05	22.23	0.6	17.45	24.8	44.45	3/4-16	73.03	44.45	95.25	29	29	10	0.29

SAZP25S	25.40	34.93	0.6	25.40	32.2	69.85	5/4-12	104.78	53.98	139.70	60	101	14	1.1
Series ZJ														
SAZJ4	4.83	7.92	0.3	5.94	7.8	15.88	10-32	31.75	19.05	39.70	3.6	3.8	10	0.014
SAZJ6	6.35	9.53	0.3	6.35	8.4	19.05	1/4-28	39.67	25.40	49.20	5.4	6.6	13.5	0.018
SAZJ7	7.94	11.10	0.3	7.92	11.4	22.23	5-16/24	47.63	31.75	58.72	8.5	8.4	11	0.032
SAZJ9	9.53	12.70	0.6	9.12	13.1	25.40	3/8-24	49.23	31.75	61.93	11	10	11	0.050
SAZJ11	11.11	14.27	0.6	10.31	14.9	28.58	7/16-20	53.98	34.93	68.28	14	13	10.5	0.068
SAZJ12	12.70	15.88	0.6	11.50	17.7	33.32	1/2-20	61.93	38.10	78.59	18	19	10	0.11
SAZJ15	15.88	19.05	0.6	12.29	21.3	38.10	5/8-18	66.68	41.28	85.73	23	21	13	0.16
SAZJ19	19.05	22.23	0.6	15.06	24.8	44.45	3/4-16	73.03	44.45	95.25	34	29	12	0.26



Bearings number	Dimensions mm													Load ratings KN		α° ≈	Weight ≈kg
	d	B	r1S min	C1 max	d1 min	d2 max	d3	h	l31 min	l4 max	d4 max	d6 max	b	Dyamic	Static		
Series E																	
SIR20ES	20	16	0.3	19	24	56	M16*1.5	50	17	78	25	36	17	30	42	9	0.37
SIR25ES	25	20	0.6	23	29	56	M16*1.5	50	17	78	25	36	21	42	48	7	0.43
SIR30ES	30	22	0.6	28	34	64	M22*1.5	60	23	92	32	40	26	62	72	6	0.70
SIR35ES	35	25	0.6	30	39	78	M28*1.5	70	29	109	40	50	28	79	104	6	1.1
SIR40ES	40	28	0.6	35	45	94	M35*1.5	85	36	132	49	60	33	99	173	7	2.1
SIR50ES	50	35	0.6	40	55	116	M45*1.5	105	46	163	61	72	37	156	265	6	3.3
SIR60ES	60	44	1.0	50	66	130	M58*1.5	130	59	195	75	90	46	245	320	6	5.5
SIR70ES	70	49	1.0	55	77	154	M65*1.5	150	66	227	86	100	51	313	440	6	8.6
SIR80ES	80	55	1.0	60	88	176	M80*2	170	81	258	102	125	55	400	570	6	12.0
SIR100ES	100	70	1.0	70	109	230	M110*2	235	111	350	138	166	65	607	965	7	28.0
Series EW																	
SIGEW12ES	12	12	0.3	10.5	15.5	32	M12*1.25	38	17	54	16	32	12	10	15	4	0.11
SIGEW16ES	16	16	0.3	13	20	40	M14*1.5	44	19	64	21	40	12	16	24	4	0.21
SIGEW20ES	20	20	0.3	17	25	47	M16*1.5	52	23	75.5	25	47	14	30	36	4	0.40
SIGEW25ES	25	25	0.6	21	30.5	58	M20*1.5	65	29	94	30	54	17	48	57	4	0.66
SIGEW32ES	32	32	0.6	27	37	70	M27*2	80	37	115	38	66	22	65	81	4	1.2
SIGEW40ES	40	40	0.6	32	46	89	M33*2	97	46	141.5	47	80	26	99	156	4	2.1
SIGEW50ES	50	50	0.6	40	57	108	M42*2	120	57	174	58	96	32	156	250	4	4.5
SIGEW63ES	63	63	1.0	52	71.5	132	M48*2	140	64	206	70	114	38	253	343	4	7.6
SIGEW80ES	80	80	1.0	66	91	168	M63*3	180	86	264	90	148	48	400	560	4	14.0
SIGEW100ES	100	100	1.0	84	113	210	M80*3	210	96	315	110	178	62	607	960	4	28.0

Bearings number	Dimensions mm											Load ratings KN		α° ≈	Weight ≈kg
	d	B	r1S min	C1	d1 min	d2 max	h	l2 min	d4 max	d7	e	Dyamic	Static		
Series E															
SK15ES	15	12	0.3	10	18	40	31	51	21	4	2.5	16	24	8	0.12

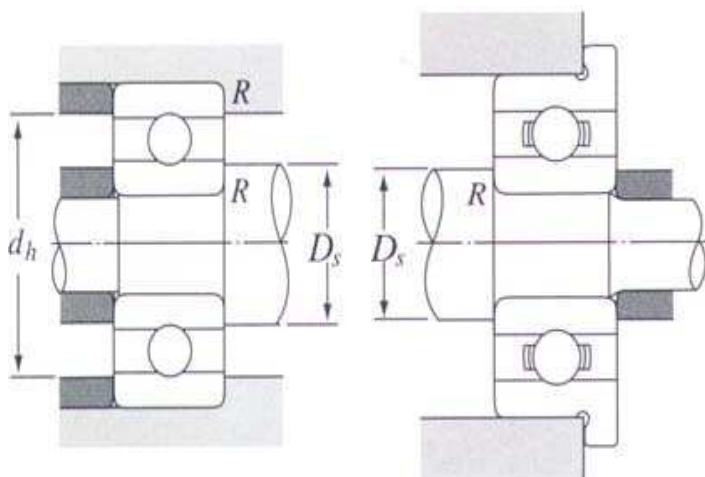
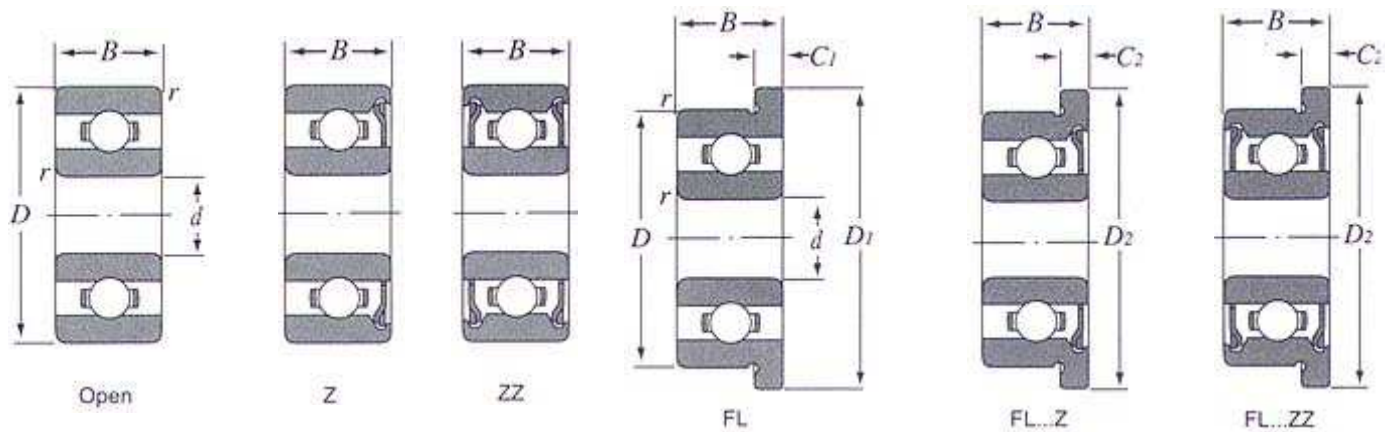
SK17ES	17	14	0.3	11	20	46	35	58	24	4	2.5	21	31	10	0.19
SK20ES	20	16	0.3	13	24	53	38	64.5	27.5	4	2.5	30	42	9	0.23
SK25ES	25	20	0.6	17	29	64	45	77	33.5	4	3.0	48	66	7	0.43
SK30ES	30	22	0.6	19	34	73	51	87.5	40	4	3.0	62	87	6	0.64
SK35ES	35	25	0.6	21	39	82	61	102	47	4	3.0	79	99	6	0.96
SK40ES	40	28	0.6	23	45	92	69	115	52	4	4.0	99	122	7	1.3
SK45ES	45	32	0.6	27	50	102	77	128	58	6	5.0	127	160	7	1.8
SK50ES	50	35	0.6	30	55	112	88	144	62	6	5.0	156	193	6	2.5
SK60ES	60	44	1.1	38	66	135	100	167.5	70	6	5.0	245	294	6	3.9
SK70ES	70	49	1.1	42	77	160	115	195	80	6	6.0	313	406	6	6.6
SK80ES	80	55	1.1	47	88	180	141	231	95	6	6.0	400	494	6	8.7
SF20ES	20	16	0.3	19	24	53	38	64.5	-	-	-	30	55	9	0.35
SF25ES	25	20	0.6	23	29	64	45	77	-	-	-	48	58	7	0.53
SF30ES	30	22	0.6	28	34	73	51	87.5	-	-	-	62	98	6	0.87
SF35ES	35	25	0.6	30	39	82	61	102	-	-	-	79	164	6	1.5
SF40ES	40	28	0.6	35	45	92	69	115	-	-	-	99	260	7	2.4
SF45ES	45	32	0.6	40	50	102	77	128	-	-	-	127	329	7	3.4
SF50ES	50	35	0.6	40	55	112	88	144	-	-	-	156	376	6	4.4
SF60ES	60	44	1.1	50	66	135	100	167.5	-	-	-	245	490	6	7.1
SF70ES	70	49	1.1	55	77	160	115	195	-	-	-	313	636	6	10
SF80ES	80	55	1.1	60	88	180	141	231	-	-	-	400	705	6	15

Bearings number	Dimensions mm														Load ratings KN		α° ≈	Weight t ≈kg
	d	B	r1S min	C1 max	d1 min	d2 max	d3	h1	l3 min	l4 max	l5 max	d4 max	d5 max	S	Dyami c	Stati c		
Series JK																		
SJK5C	5	8	0.3	7.5	7.7	18	M5	27	8	36	4	9	12	10	3.6	4.6	4	0.016
SJK6C	6	9	0.3	7.5	7.8	20	M6	30	9	40	5	10	13	10	4.7	5.2	9	0.019
SJK8C	8	12	0.3	9.5	10.3	24	M8	36	12	48	5	12.5	16	13	7.6	8.2	12	0.036
SJK10C	10	14	0.6	11.5	12.9	30	M10	43	15	58	6.5	15	19	16	12	15	10	0.088
SJK12C	12	16	0.6	12.5	15.4	34	M12	50	18	67	6.5	17.5	22	18	14	19	12	0.12
SJK14C	14	19	0.6	14.5	16.8	38	M14	57	21	76	8	20	25	21	19	24	14	0.14
SJK16C	16	21	0.6	15.5	19.3	42	M16	64	24	85	8	22	27	24	23	29	14	0.24
SJK18C	18	23	0.6	17.5	21.8	46	M18*1.5	71	27	94	10	25	31	27	29	34	13	0.32
SJK20C	20	25	0.6	18.5	24.3	50	M20*1.5	77	30	102	10	27.5	34	30	34	40	14	0.43
SJK22C	22	28	0.6	21	25.8	56	M22*1.5	84	33	112	12	30	37	34	42	50	14	0.61
SJK25C	25	31	0.6	23	29.5	60	M24*2	94	36	124	12	33.5	42	36	52	57	14	0.81
SJK28C	28	35	0.6	26	32.2	66	M27*2	103	41	136	14	37	46	41	66	69	14	1.2

SJK30C	30	37	0.6	27	34.8	70	M30*2	110	45	145	15	40	50	46	73	77	15	1.4
Series E																		
SI5C	5	6	0.3	4.5	7	21	M5	30	11	41.5	5	10	13	10	3.6	8.1	13	0.016
SI6C	6	6	0.3	4.5	8	21	M6	30	11	41.5	5	11	13	11	3.6	8.1	13	0.017
SI8C	8	8	0.3	6.5	10	24	M8	36	15	48	5	13	16	13	5.8	12.9	15	0.035
SI10C	10	9	0.3	7.5	13	29	M10	43	15	57.5	6.5	16	19	16	8.6	17.6	12	0.061
SI12C	12	10	0.3	8.5	15	34	M12	50	18	67	7	19	22	18	11	24.5	10	0.096
SI15C	15	12	0.3	10.5	18	40	M14	61	21	81	8	21	26	21	18	36	8	0.16
SI17C	17	14	0.3	11.5	20	46	M16	67	24	90	10	25	29	27	22	45	10	0.23
SI20C	20	16	0.3	13.5	24	53	M20*1.5	77	30	103.5	10	28	34	30	31	60	9	0.32
SI25C	25	20	0.6	18	29	64	M24*2	94	36	126	12	35	42	36	51	83	7	0.62
SI30C	30	22	0.6	20	34	73	M30*2	110	45	146.5	15	42	50	46	65	110	6	0.97
SI35ET-2RS	35	25	0.6	22	39	82	M36*3	125	60	166	15	48	58	55	112	146	6	1.5
SI40ET-2RS	40	28	0.6	24	45	92	M39*3	142	65	188	18	52	65	60	140	180	7	2.1
SI45ET-2RS	45	32	0.6	28	50	102	M42*3	145	65	196	20	58	70	65	180	240	7	2.7
SI50ET-2RS	50	35	0.6	31	55	112	M45*3	160	68	216	20	62	75	70	220	290	6	3.5
SI60ET-2RS	60	44	1.0	39	66	135	M52*3	175	70	242.5	20	70	88	80	345	450	6	5.6
SI70ET-2RS	70	49	1.0	43	77	160	M56*4	200	80	280	20	80	98	85	440	610	6	8.3
SI80ET-2RS	80	55	1.0	48	88	180	M64*4	230	85	320	25	95	110	95	567	750	6	13

Bearings number	Dimensions mm										Load ratings KN		α° ≈	Weight ≈kg
	d	B	r1S min	C1	d1 min	d2 max	d3	h	l1 min	l2 max	Dyamic	Static		
Series JK														
SAJK5C	5	8	0.3	7.5	7.7	18	M5	33	19	42	3.6	3.9	4	0.013
SAJK6C	6	9	0.3	7.5	8.9	20	M6	36	21	46	4.7	5.2	9	0.015
SAJK8C	8	12	0.3	9.5	10.3	24	M8	42	25	54	7.6	8.2	12	0.034
SAJK10C	10	14	0.6	11.5	12.9	30	M10	48	28	63	12	15	10	0.071
SAJK12C	12	16	0.6	12.5	15.4	34	M12	54	32	71	14	19	12	0.11
SAJK14C	14	19	0.6	14.5	16.8	38	M14	60	36	79	19	24	14	0.13
SAJK16C	16	21	0.6	15.5	19.3	42	M16	66	37	87	23	29	14	0.22
SAJK18C	18	23	0.6	17.5	21.8	46	M18*1.5	72	41	95	29	34	13	0.29
SAJK20C	20	25	0.6	18.5	24.3	50	M20*1.5	78	45	103	34	40	14	0.36
SAJK22C	22	28	0.6	21	25.8	56	M22*1.5	84	48	112	42	50	14	0.49
SAJK25C	25	31	0.6	23	29.5	60	M24*2	94	55	124	52	57	14	0.65
SAJK28C	28	35	0.6	26	32.2	66	M27*2	103	62	136	66	69	14	0.87
SAJK30C	30	37	0.6	27	34.8	70	M30*2	110	66	145	73	77	15	1.1
Series E														

SA5C	5	6	0.3	4.5	7	21	M5	36	16	46.5	3.6	3.9	13	0.011
SA6C	6	6	0.3	4.5	8	21	M6	36	16	46.5	3.6	5.5	13	0.013
SA8C	8	8	0.3	6.5	10	24	M8	42	21	54	5.8	10	15	0.026
SA10C	10	9	0.3	7.5	13	29	M10	48	26	62.5	8.6	16	12	0.044
SA12C	12	10	0.3	8.5	15	34	M12	54	28	71	11	23	10	0.066
SA15C	15	12	0.3	10.5	18	40	M14	63	34	83	18	32	8	0.12
SA17C	17	14	0.3	11.5	20	46	M16	69	36	92	22	44	10	0.17
SA20C	20	16	0.3	13.5	24	53	M20*1.5	78	43	104.5	31	60	9	0.28
SA25C	25	20	0.6	18	29	64	M24*2	94	53	126	51	83	7	0.51
SA30C	30	22	0.6	20	34	73	M30*2	110	65	146.5	65	110	6	0.84
SA35ET-2RS	35	25	0.6	22	39	82	M36*3	140	82	181	112	146	6	1.4
SA40ET-2RS	40	28	0.6	24	45	92	M39*3	150	86	196	140	180	7	1.8
SA45ET-2RS	45	32	0.6	28	50	102	M42*3	163	92	214	180	240	7	2.5
SA50ET-2RS	50	35	0.6	31	55	112	M45*3	185	104	241	220	290	6	3.6
SA60ET-2RS	60	44	1.0	39	66	135	M52*3	210	115	277.5	345	450	6	5.7
SA70ET-2RS	70	49	1.0	43	77	160	M56*4	235	125	315	440	610	6	7.9
SA80ET-2RS	80	55	1.0	48	88	180	M64*4	270	140	360	567	750	6	12



$$P_r = X F_r + Y F_a$$

F_a --- C_{or}	e	$F_a \leq e$		$F_a > e$	
		x	y	x	y
0.010	0.18	1	0	0.56	1
0.020	0.20				
0.040	0.24				
0.070	0.27				
0.10	0.29				
0.15	0.32				
0.20	0.35				
0.30	0.38				

$$P_{or} = 0.6 F_r + 0.5 F_a$$

When $P_{or} < F_r$, Let $P_{or} = F_r$

Main size(mm)									Load rating(N)		Maxronout speed (rpm)		Bearing No.						Fixing size(mm)			Weight	
d	D	B	B1	D1	D2	C1	C2	r/min1)	Cr	Cor	Grease	Oil	Open	Z	ZZ	FL	FL...Z	FL...ZZ	Ds	dh	R	Open	Weight
1	3	1	1.5	3.8	3.8	0.3	0.45	0.05	80	22	120000	140000	681	681Z	681ZZ	FL681	FL681Z	FL681ZZ	1.6	2.4	0.005	0.05	0.05
	4	1.6	2.3	5	5	0.5	0.6	0.1	157	43	96000	110000	691	691Z	691ZZ	FL691	FL691Z	FL691ZZ	1.8	3.2	0.1	0.11	0.05
1.2	4	1.8	-	4.8	-	0.4	-	0.08	159	44	93000	110000	BC1.2-4	-	-	-	-	-	1.8	3.4	0.08	0.10	0.05
1.5	4	1.2	2	5	5	0.4	0.6	0.05	102	29	88000	110000	68/1.5	68/1.5Z	68/1.5ZZ	FL68/1.5	FL68/1.5Z	FL68/1.5ZZ	2.3	3.2	0.05	0.07	0.05
	5	2.2	2.6	6.5	6.5	0.6	0.8	0.15	237	68	79000	93000	69/1.5	69/1.5Z	69/1.5ZZ	FL69/1.5	FL69/1.5Z	FL69/1.5ZZ	2.7	3.8	0.15	0.18	0.05
	6	5	3	7.5	7.5	0.6	0.8	0.15	274	86	71000	84000	60/1.5	60/1.5Z	60/1.5ZZ	FL60/1.5	FL60/1.5Z	FL60/1.5ZZ	2.7	4.8	0.15	0.35	0.05
2	4	1.2	2	-	-	-	-	0.05	104	37	83000	98000	672	672Z	672ZZ	FL672	FL672Z	FL672ZZ	2.5	3.5	0.05	0.06	0.05
	5	1.5	2.3	6.1	6.1	0.5	0.6	0.08	171	51	74000	87000	682	682Z	682ZZ	FL682	FL682Z	FL682ZZ	2.8	4.2	0.08	0.13	0.05
	5	2	2.5	-	-	-	-	0.1	171	51	74000	87000	BC2-5	BC2-5Z	BC2-5ZZ	FLBC2-5	FLBC2-5Z	FLBC2-5ZZ	2.8	4.2	0.1	0.16	0.05
	6	2.3	3	7.5	7.5	0.6	0.8	0.15	279	89	67000	79000	692	692Z	692ZZ	FL692	FL692Z	FL692ZZ	3.2	4.8	0.15	0.31	0.05
	6	2.5	-	7.2	-	0.6	-	0.15	279	89	67000	79000	BC2-6	-	-	-	-	-	3.2	4.8	0.15	0.32	0.05
	7	2.5	3	-	8.2	-	0.6	0.15	284	96	59000	70000	BC2-7	BC2-7Z	BC2-7ZZ	FLBC2-7	FLBC2-7Z	FLBC2-7ZZ	3.2	5.8	0.15	0.44	0.05
	7	2.8	3.5	8.5	8.5	0.7	0.9	0.15	380	125	62000	73000	602	602Z	602ZZ	FL602	FL602Z	FL602ZZ	3.2	5.8	0.15	0.54	0.05
2.5	5	1.5	2.3	-	-	-	-	0.08	153	59	70000	82000	67/2.5	67/2.5Z	67/2.5ZZ	FL67/2.5	FL67/2.5Z	FL67/2.5ZZ	3.1	4.4	0.08	0.11	0.05
	6	1.8	2.6	7.1	7.1	0.5	0.8	0.08	209	73	65000	76000	68/2.5	68/2.5Z	68/2.5ZZ	FL68/2.5	FL68/2.5Z	FL68/2.5ZZ	3.7	4.8	0.08	0.22	0.05
	7	-	3	-	8.2	-	0.6	0.15	284	96	59000	70000	-	BC2.5-7Z	BC2.5-7ZZ	FLBC2.5-7	FLBC2.5-7Z	FLBC2.5-7ZZ	3.7	5.8	0.15	0.602	0.05
	7	2.5	3.5	8.5	8.5	0.7	0.9	0.15	284	96	59000	70000	69/2.5	69/2.5Z	69/2.5ZZ	FL69/2.5	FL69/2.5Z	FL69/2.5ZZ	3.7	5.8	0.15	0.43	0.05
	8	2.5	2.8	9.2	-	0.6	-	0.15	430	152	56000	66000	BC2.5-8	BC2.5-8Z	BC2.5-8ZZ	FLBC2.5-8	FLBC2.5-8Z	FLBC2.5-8ZZ	3.7	6.8	0.15	0.57	0.05
	8	2.8	4	9.5	9.5	0.7	0.9	0.15	550	174	56000	66000	60/2.5	60/2.5Z	60/2.5ZZ	FL60/2.5	FL60/2.5Z	FL60/2.5ZZ	3.7	6.8	0.15	0.72	0.05
	6	2	2.5	7.2	7.2	0.6	0.6	0.08	242	94	60000	71000	673	673Z	673ZZ	FL673	FL673Z	FL673ZZ	3.6	5.4	0.08	0.20	0.05
	7	2	3	8.1	8.1	0.5	0.8	0.1	390	130	58000	68000	683	683Z	683ZZ	FL683	FL683Z	FL683ZZ	4.2	5.8	0.1	0.33	0.05
3	8	2.5	-	9.2	-	0.6	-	0.15	560	180	54000	63000	BC3-8	-	-	-	-	-	4.2	6.8	0.15	0.52	0.05
	8	3	4	9.5	9.5	0.7	0.9	0.15	560	180	54000	63000	693	693Z	693ZZ	FL693	FL693Z	FL693ZZ	4.2	6.8	0.15	0.61	0.05
	9	2.5	4	10.2	10.2	0.6	0.8	0.15	635	219	50000	59000	BC3-9	BC3-9Z	BC3-9ZZ	FLBC3-9	FLBC3-9Z	FLBC3-9ZZ	4.2	7.8	0.15	0.71	0.05
	9	2	5	10.5	10.5	0.7	1	0.15	635	219	50000	59000	603	603Z	603ZZ	FL603	FL603Z	FL603ZZ	4.2	7.8	0.15	0.92	0.05
	10	4	4	11.5	11.5	1	1	0.15	640	224	50000	58000	623	623Z	623ZZ	FL623	FL623Z	FL623ZZ	4.2	8.8	0.15	1.6	0.05
	7	2	2.5	8.2	8.2	0.6	0.6	0.08	269	117	54000	63000	674	674Z	674ZZ	FL674	FL674Z	FL674ZZ	4.6	6.4	0.08	0.28	0.05
	8	2	3	9.2	9.2	0.6	0.6	0.08	395	140	52000	61000	BC4-8	BC4-8Z	BC4-8ZZ	FLBC4-8	FLBC4-8Z	FLBC4-8ZZ	5.2	6.8	0.08	0.38	0.05
4	9	2.5	4	10.3	10.3	0.6	1	0.1	640	224	49000	57000	684	684Z	684ZZ	FL684	FL684Z	FL684ZZ	5.2	7.8	0.1	0.67	0.05
	10	3	4	11.2	11.3	0.6	0.8	0.15	650	235	46000	55000	BC4-10	BC4-10Z	BC4-10ZZ	FLBC4-10	FLBC4-10Z	FLBC4-10ZZ	5.2	8.8	0.15	1.0	0.05
	11	4	4	12.5	12.5	1	1	0.15	715	276	45000	52000	694	694Z	694ZZ	FL694	FL694Z	FL694ZZ	5.2	9.8	0.15	1.8	0.05
	12	4	4	13.5	13.5	1	1	0.2	970	360	43000	51000	604	604Z	604ZZ	FL604	FL604Z	FL604ZZ	5.6	10.4	0.2	2.1	0.05
	13	5	5	15	15	1	1	0.2	1310	490	42000	49000	624	624Z	624ZZ	FL624	FL624Z	FL624ZZ	5.6	11.4	0.2	3.2	0.05
	16	5	5	-	-	-	-	0.3	1760	680	37000	44000	634	634Z	634ZZ	FL634	FL634Z	FL634ZZ	6	14	0.3	5.1	0.05

Main size(mm)									Load rating(N)		Maxronout speed (rpm)		Bearing No.						Fixing size(mm)		
d	D	B	B1	D1	D2	C1	C2	r/min1)	Cr	Cor	Grease	Oil	Open	Z	ZZ	FL	FL...Z	FL...ZZ	Ds	dh	
5	8	2	2.5	9.2	9.2	0.6	0.6	0.08	292	142	49000	57000	675	675Z	675ZZ	FL675	FL675Z	FL675ZZ	5.6	7.4	
	9	2.5	3	10.2	10.2	0.6	0.6	0.15	500	211	46000	55000	BC5-9	BC5-9Z	BC5-9ZZ	FLBC5-9	FLBC5-9Z	FLBC5-9ZZ	6.2	7.8	
	10	3	4	11.2	11.6	0.6	0.8	0.15	715	276	45000	52000	BC5-10	BC5-10Z	BC5-10ZZ	FLBC5-10	FLBC5-10Z	FLBC5-10ZZ	6.2	8.8	
	11	-	4	-	12.6	-	0.8	0.15	715	282	43000	51000	-	BC5-11Z	BC5-11ZZ	-	FLBC5-11Z	FLBC5-11ZZ	6.2	9.8	
	11	3	5	12.5	12.5	0.8	1	0.15	715	282	43000	51000	685	685Z	685ZZ	FL685	FL685Z	FL685ZZ	6.2	9.8	
	13	4	4	15	15	1	1	0.2	1080	430	40000	47000	695	695Z	695ZZ	FL695	FL695Z	FL695ZZ	6.6	11.4	
	13	-	5	-	15	-	1	0.2	1080	430	40000	47000	-	BC5-13Z	BC5-13ZZ	-	FLBC5-13Z	FLBC5-13ZZ	6.6	11.4	
	14	5	5	16	16	1	1	0.2	1330	505	39000	46000	605	605Z	605ZZ	FL605	FL605Z	FL605ZZ	6.6	12.4	
	16	5	5	18	18	1	1	0.3	1760	680	37000	44000	625	625Z	625ZZ	FL625	FL625Z	FL625ZZ	7	14	
	19	6	6	-	-	-	-	0.3	2340	885	34000	40000	635	635Z	635ZZ	-	-	-	7	17	
	10	2.5	3	11.2	11.2	0.6	0.6	0.1	530	240	43000	51000	676	676Z	676ZZ	FL676	FL676Z	FL676ZZ	6.8	9.2	
	6	12	3	4	13.2	13.6	0.6	0.8	0.15	830	365	40000	47000	BC6-12	BC6-12Z	BC6-12ZZ	FLBC6-12	FLBC6-12Z	FLBC6-12ZZ	7.2	10.8
		13	3.5	5	15	15	1	1.1	0.15	1080	440	39000	46000	686	686Z	686ZZ	FL686	FL686Z	FL686ZZ	7.2	11.8
15		5	5	17	17	1.2	1.2	0.2	1350	530	37000	44000	696	696Z	696ZZ	FL696	FL696Z	FL696ZZ	7.6	13.4	
16		6	6	-	-	-	-	0.2	2170	845	36000	42000	BC6-16	BC6-16Z	BC6-16ZZ	-	-	-	7.6	14.4	
17		6	6	19	19	1.2	1.2	0.3	2190	865	35000	42000	606	606Z	606ZZ	FL606	FL606Z	FL606ZZ	8	15	

	19	6	6	22	22	1.5	1.5	0.3	2340	885	34000	40000	626	626Z	626ZZ	FL626	FL626Z	FL626ZZ	8	17	0.3	8.1	9
	11	3	3	12.2	12.2	0.6	0.6	0.1	555	269	40000	47000	677	677Z	677ZZ	FL677	FL677Z	FL677ZZ	7.8	10.2	0.1	0.67	0.
	13	4	4	14.2	14.6	0.6	0.8	0.15	825	375	38000	45000	BC7-13	BC7-13Z	BC7-13ZZ	FLBC7-13	FLBC7-13Z	FLBC7-13ZZ	8.2	11.8	0.15	1.4	1
7	14	5	5	16	16	1	1.1	0.15	1170	510	37000	44000	687	687Z	687ZZ	FL687	FL687Z	FL687ZZ	8.2	12.8	0.15	2.1	2
	17	5	5	19	19	1.2	1.2	0.3	1610	715	35000	41000	697	697Z	697ZZ	FL697	FL697Z	FL697ZZ	9	15	0.3	5.2	5
	19	6	6	-	-	-	-	0.3	2240	910	34000	40000	607	607Z	607ZZ	-	-	-	9	17	0.3	8.0	-
	22	7	7	-	-	-	-	0.3	3350	1400	32000	37000	627	627Z	627ZZ	-	-	-	9	20	0.3	13	-
	12	3.5	3.5	13.2	13.6	0.6	0.8	0.1	575	298	38000	45000	678	678Z	678ZZ	FL678	FL678Z	FL678ZZ	8.8	11.2	0.1	0.75	0.
	14	4	4	15.6	15.6	0.8	0.8	0.15	820	385	36000	43000	BC8-14	BC8-14Z	BC8-14ZZ	FLBC8-14	FLBC8-14Z	FLBC8-14ZZ	9.2	12.8	0.15	1.8	1
8	16	5	5	18	18	1	1.1	0.2	1260	585	35000	41000	688	688Z	688ZZ	FL688	FL688Z	FL688ZZ	9.6	14.4	0.2	3.1	3
	19	6	6	22	22	1.5	1.5	0.3	1990	865	33000	39000	698	698Z	698ZZ	FL698	FL698Z	FL698ZZ	10	17	0.3	7.3	8
	22	7	7	25	25	1.5	1.5	0.3	3350	1400	32000	37000	608	608Z	608ZZ	FL608	FL608Z	FL608ZZ	10	20	0.3	12	1
	24	8	8	-	-	-	-	0.3	4000	1590	31000	36000	628	628Z	628ZZ	-	-	-	10	22	0.3	17	-
	14	4.5	4.5	-	-	-	-	0.1	920	465	36000	42000	679	679Z	679ZZ	-	-	-	9.8	13.2	0.1	1.4	-
	17	5	5	19	19	1	1.1	0.2	1720	820	33000	39000	689	689Z	689ZZ	FL689	FL689Z	FL689ZZ	10.6	15.4	0.2	3.2	3
9	20	6	6	-	-	-	-	0.3	2480	1090	32000	38000	699	699Z	699ZZ	-	-	-	11	18	0.3	8.2	-
	24	7	7	-	-	-	-	0.3	3400	1450	31000	36000	609	609Z	609ZZ	-	-	-	11	22	0.3	14	-
	26	8	8	-	-	-	-	0.3	4500	1960	30000	35000	629	629Z	629ZZ	-	-	-	13	22	0.3	20	-

Attention:1)The minimum size for r.

1.Also supply bearing with seals.

2.1N = 0.102kgf

Attention:2)The weight of bearing with dustproof two sides.